

TERRACES

AT THE AMBASSADOR GARDENS

RESIDENCE

412 PENTHOUSE

SIZE
3,947 Sq. Ft.

BEDROOMS
3

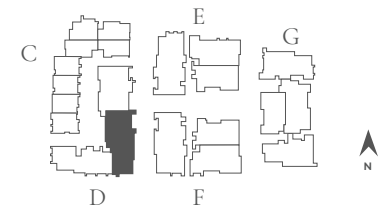
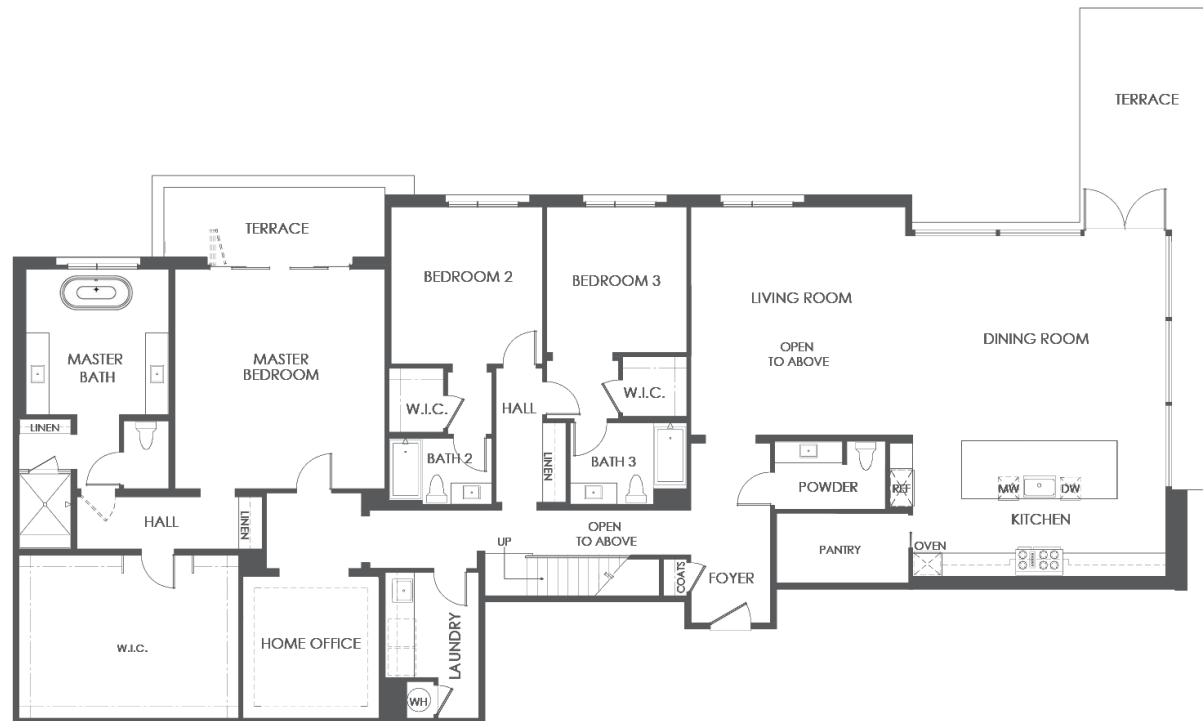
BATHS
3 Full + 2 Powder

ENTRY
Level 4

NATURAL LIGHT
Southeast Facing

FEATURES
Formal Dining Room
Living Room
Home Office/Retreat
Roof Terrace
Mezzanine
4-Car Garage

BUILDING D | UNIT 412 | FLOOR PLAN 9A



SALES GALLERY

328 W. GREEN ST. # 100
PASADENA, CA 91105

CONTACT

626.604.2460
AGSALES@ETCOHOMES.COM

Walls, windows, patios and roof terraces vary per elevation and lot location. All illustrations are artist's concepts, are not to scale and are subject to change in actual production. Square footages are approximate. Builder has the right to change square footage, plans and pricing without notice. © 2022 etco HOMES. CalDRE license no. 01878688.

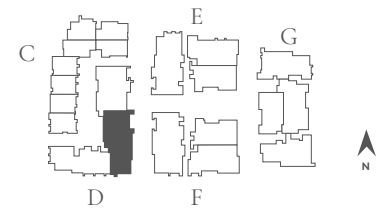
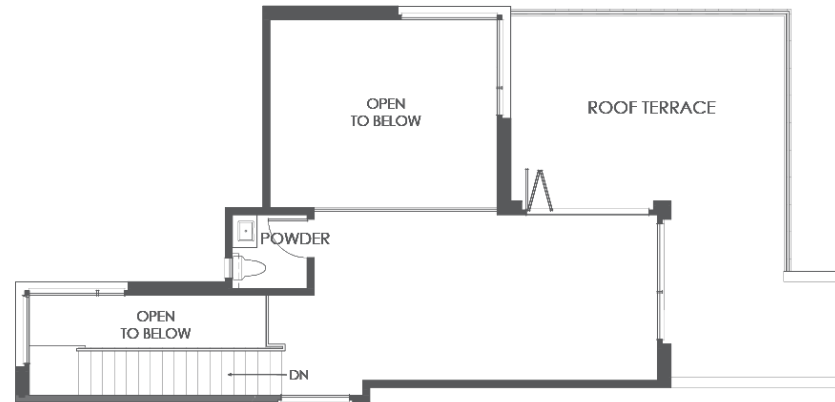
TERRACES

AT THE AMBASSADOR GARDENS

RESIDENCE

412 MEZZANINE

PENTHOUSE



BUILDING D | UNIT 412 | FLOOR PLAN 9A

SALES GALLERY

328 W. GREEN ST. # 100
PASADENA, CA 91105

CONTACT

626.604.2460
AGSALES@ETCOHOMES.COM

Walls, windows, patios and roof terraces vary per elevation and lot location. All illustrations are artist's concepts, are not to scale and are subject to change in actual production. Square footages are approximate. Builder has the right to change square footage, plans and pricing without notice. © 2022 etco HOMES. CalDRE license no. 01878688.