

TERRACES

AT THE AMBASSADOR GARDENS

RESIDENCE

410 PENTHOUSE

SIZE
4,430 Sq. Ft.

BEDROOMS
3

BATHS
3 Full + 2 Powder

ENTRY
Level 4

NATURAL LIGHT
Southwest Facing

FEATURES
Great Room
Mezzanine
Entertainment Room
Roof Terrace
4-Car Garage



BUILDING F | UNIT 410 | FLOOR PLAN 10C

SALES GALLERY

328 W. GREEN ST. # 100
PASADENA, CA 91105

CONTACT

626.604.2460
AGSALES@ETCOHOMES.COM

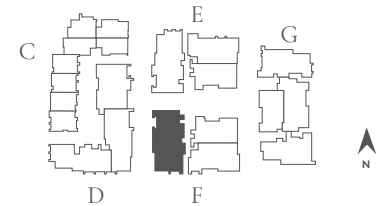
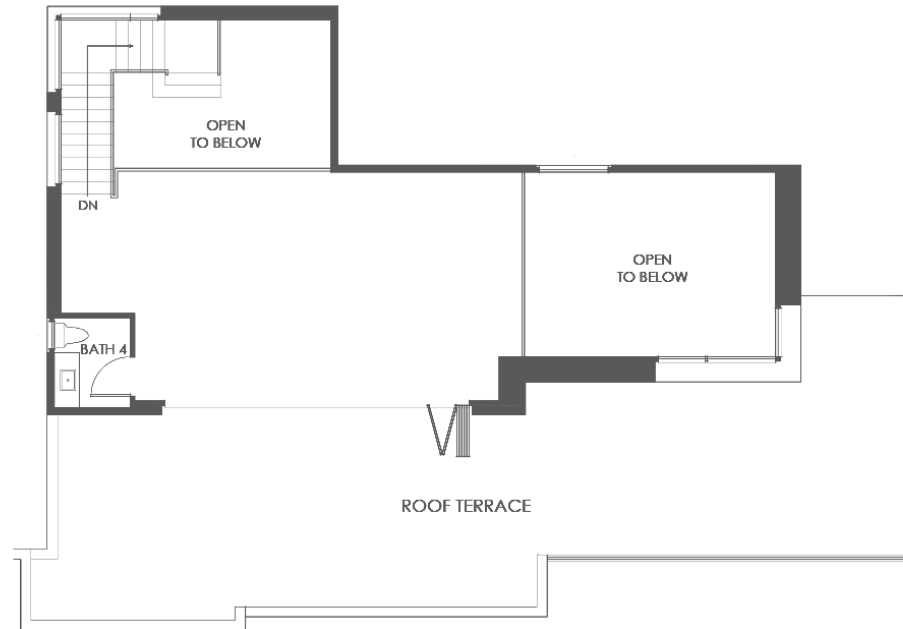
Walls, windows, patios and roof terraces vary per elevation and lot location. All illustrations are artist's concepts, are not to scale and are subject to change in actual production. Square footages are approximate. Builder has the right to change square footage, plans and pricing without notice. © 2021 etco HOMES. CalDRE license no. 01878688.

TERRACES

AT THE AMBASSADOR GARDENS

RESIDENCE

410 MEZZANINE
PENTHOUSE



BUILDING F | UNIT 410 | FLOOR PLAN 10C

SALES GALLERY

328 W. GREEN ST. # 100
PASADENA, CA 91105

CONTACT

626.604.2460
AGSALES@ETCOHOMES.COM

Walls, windows, patios and roof terraces vary per elevation and lot location. All illustrations are artist's concepts, are not to scale and are subject to change in actual production. Square footages are approximate. Builder has the right to change square footage, plans and pricing without notice. © 2021 etco HOMES. CalDRE license no. 01878688.