

TERRACES

AT THE AMBASSADOR GARDENS

RESIDENCE

211
SINGLE-LEVEL

SIZE
3,407 Sq. Ft.

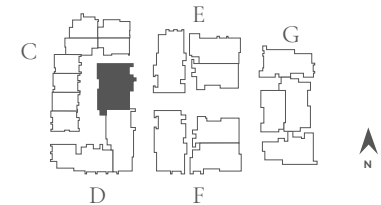
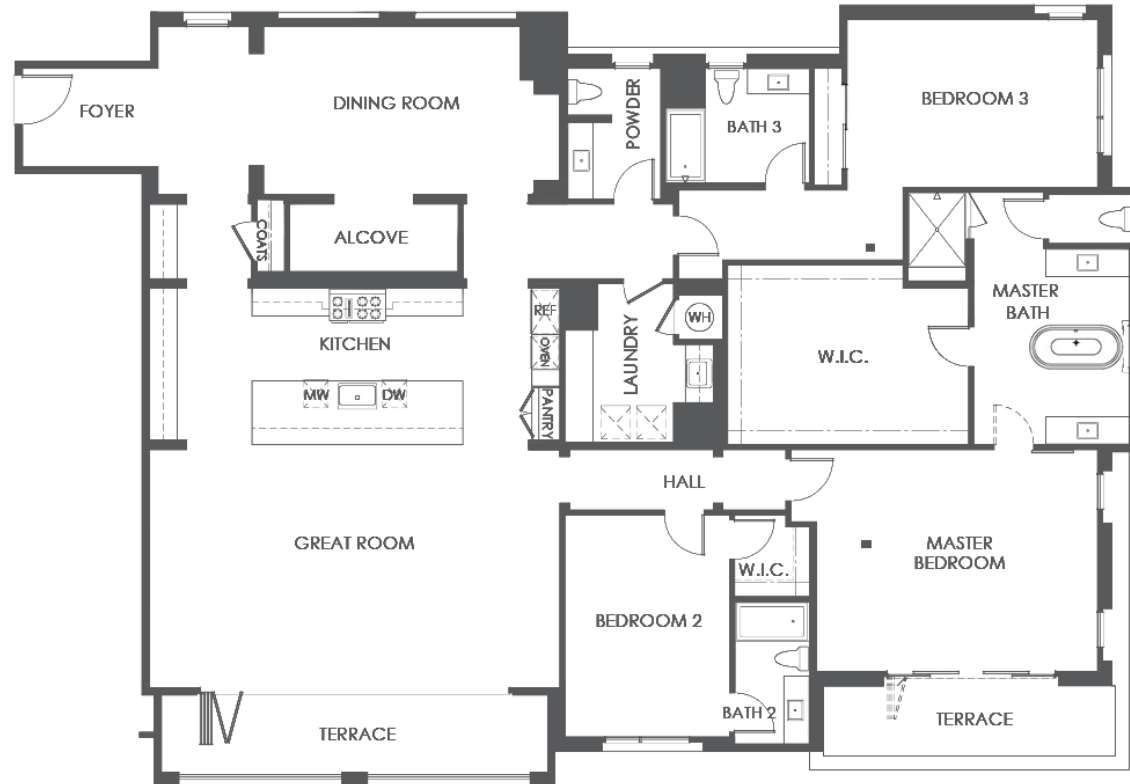
BEDROOMS
3

BATHS
3.5

ENTRY
Level 2

NATURAL LIGHT
East Facing

FEATURES
Alcove at Entry
Formal Dining Room
with Butler's Pantry Great Room
Terraces
3-Car Garage



BUILDING D | UNIT 211 | FLOOR PLAN 8A

SALES GALLERY
328 W. GREEN ST. # 100
PASADENA, CA 91105

CONTACT
626.604.2460
AGSALES@ETCOHOMES.COM

Walls, windows, patios and roof terraces vary per elevation and lot location. All illustrations are artist's concepts, are not to scale and are subject to change in actual production. Square footages are approximate. Builder has the right to change square footage, plans and pricing without notice. © 2021 etco HOMES. CalDRE license no. 01878688.