

# TERRACES

AT THE AMBASSADOR GARDENS

RESIDENCE

## 401 PENTHOUSE

SIZE  
3,181 Sq. Ft.

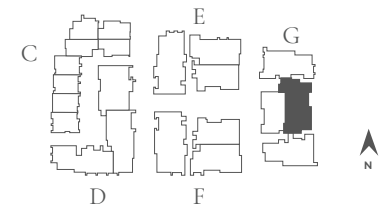
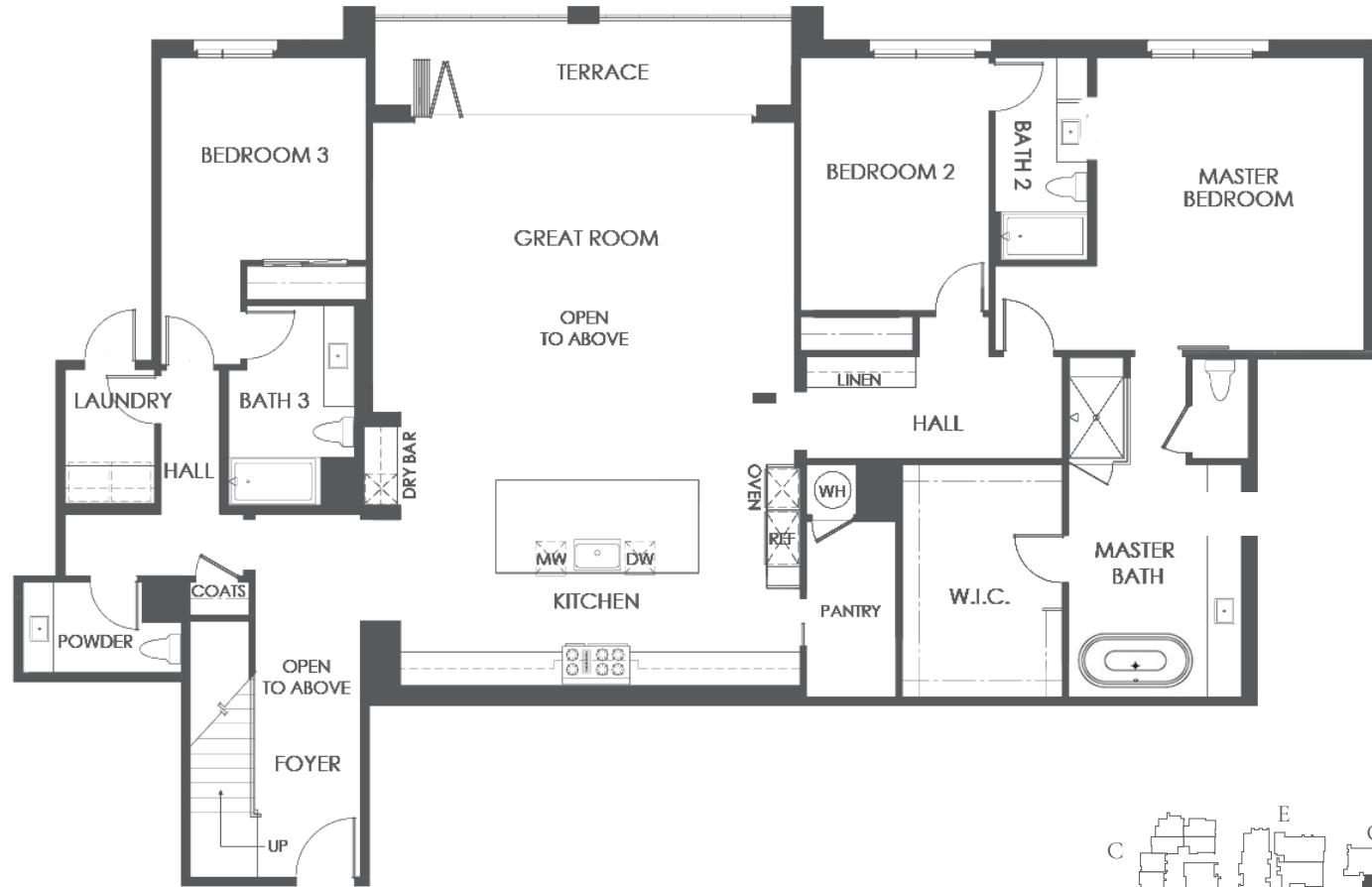
BEDROOMS  
3

BATHS  
3 Full + 2 Powder

ENTRY  
Level 4

NATURAL LIGHT  
East Facing

FEATURES  
Great Room  
Mezzanine  
Entertainment Room  
Roof Terrace  
4-Car Garage



BUILDING G | UNIT 401 | FLOOR PLAN 5B

### SALES GALLERY

328 W. GREEN ST. # 100  
PASADENA, CA 91105

### CONTACT

626.604.2460  
AGSALES@ETCOHOMES.COM

Walls, windows, patios and roof terraces vary per elevation and lot location. All illustrations are artist's concepts, are not to scale and are subject to change in actual production. Square footages are approximate. Builder has the right to change square footage, plans and pricing without notice. © 2021 etco HOMES. CalDRE license no. 01878688.