

TERRACES

AT THE AMBASSADOR GARDENS

RESIDENCE

207
SINGLE-LEVEL

SIZE
3,945 Sq. Ft.

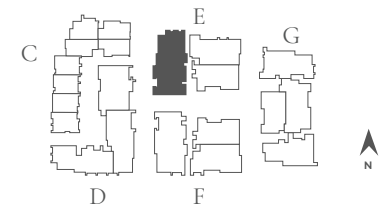
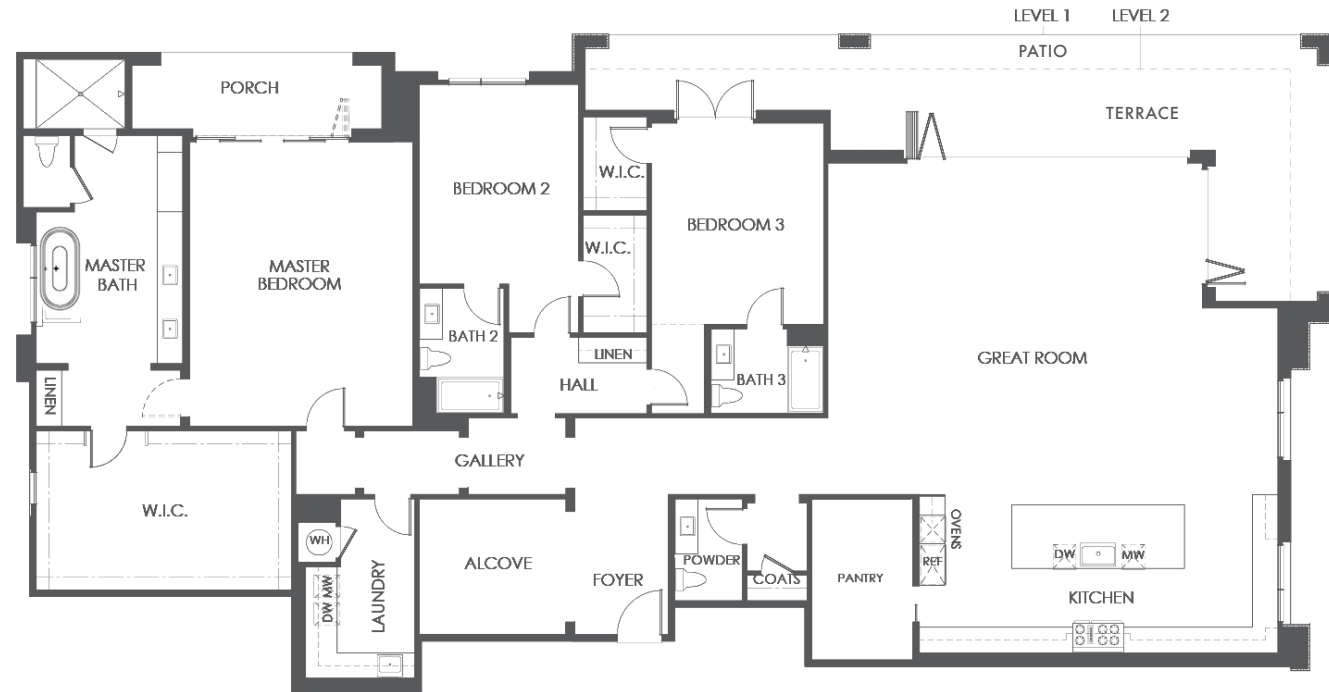
BEDROOMS
3

BATHS
3.5

ENTRY
Level 2

NATURAL LIGHT
Northwest Facing

FEATURES
Alcove at Entry
Great Room
Terrace Patio
3-Car Garage



BUILDING E | UNIT 207 | FLOOR PLAN 10B

SALES GALLERY

328 W. GREEN ST. # 100
PASADENA, CA 91105

CONTACT

626.604.2460
AGSALES@ETCOHOMES.COM

Walls, windows, patios and roof terraces vary per elevation and lot location. All illustrations are artist's concepts, are not to scale and are subject to change in actual production. Square footages are approximate. Builder has the right to change square footage, plans and pricing without notice. © 2021 etco HOMES. CalDRE license no. 01878688.