

TERRACES

AT THE AMBASSADOR GARDENS

RESIDENCE

112

SINGLE-LEVEL

SIZE

3,585 Sq. Ft.

BEDROOMS

3

BATHS

3.5

ENTRY

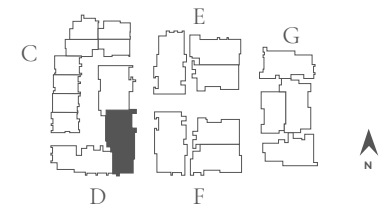
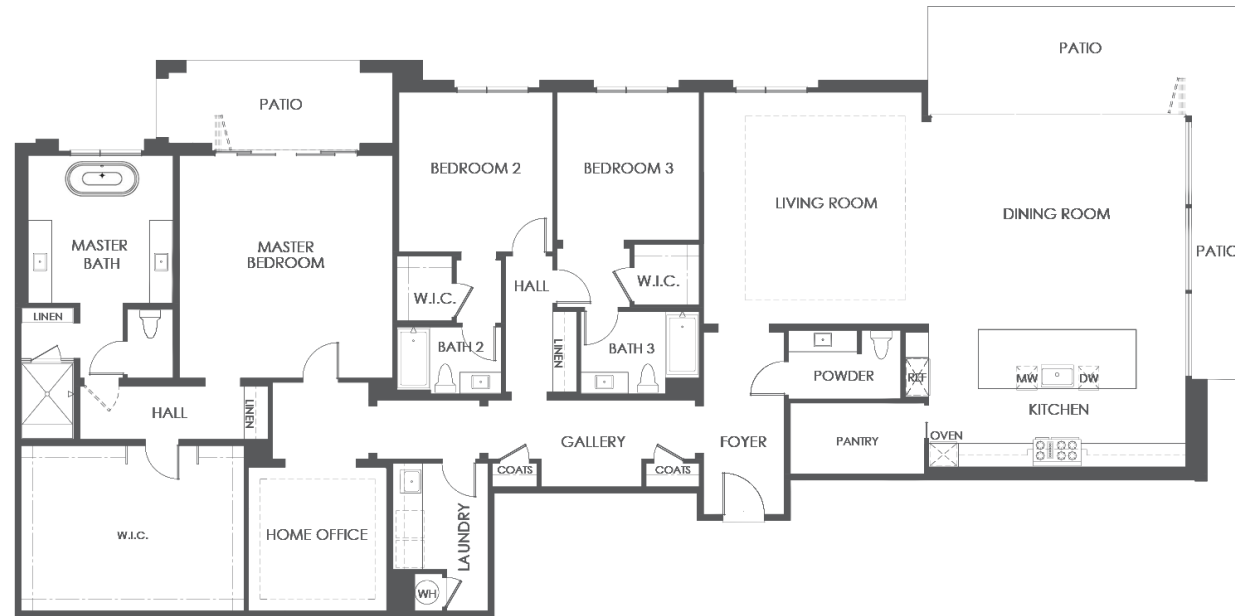
Level 1

NATURAL LIGHT

Southeast Facing

FEATURES

Formal Dining Room
Living Room
Home Office/Retreat
2 Patios
3-Car Garage



BUILDING D | UNIT 112 | FLOOR PLAN 9A

SALES GALLERY

328 W. GREEN ST. # 100
PASADENA, CA 91105

CONTACT

626.604.2460
AGSALES@ETCOHOMES.COM

Walls, windows, patios and roof terraces vary per elevation and lot location. All illustrations are artist's concepts, are not to scale and are subject to change in actual production. Square footages are approximate. Builder has the right to change square footage, plans and pricing without notice. © 2021 etco HOMES. CalDRE license no. 01878688.