

# TERRACES

AT THE AMBASSADOR GARDENS

RESIDENCE

## III

### SINGLE-LEVEL

SIZE

3,407 Sq. Ft.

BEDROOMS

3

BATHS

3.5

ENTRY

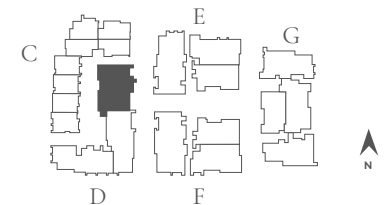
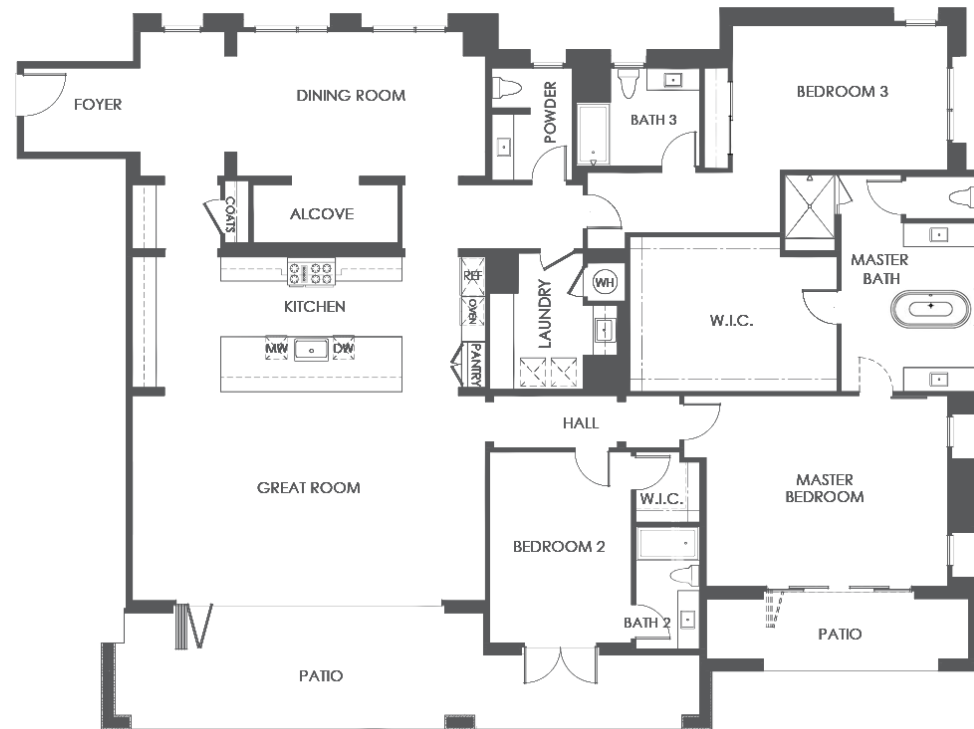
Level 1

NATURAL LIGHT

East Facing

FEATURES

Alcove at Entry  
Formal Dining Room with Butler's Pantry  
Great Room  
2 Patios  
3-Car Garage



BUILDING D | UNIT 111 | FLOOR PLAN 8A

SALES GALLERY

328 W. GREEN ST. # 100  
PASADENA, CA 91105

CONTACT

626.604.2460  
AGSALES@ETCOHOMES.COM

Walls, windows, patios and roof terraces vary per elevation and lot location. All illustrations are artist's concepts, are not to scale and are subject to change in actual production. Square footages are approximate. Builder has the right to change square footage, plans and pricing without notice. © 2021 etco HOMES. CalDRE license no. 01878688.