

# TERRACES

AT THE AMBASSADOR GARDENS

RESIDENCE

107  
SINGLE-LEVEL

SIZE  
3,945 Sq. Ft.

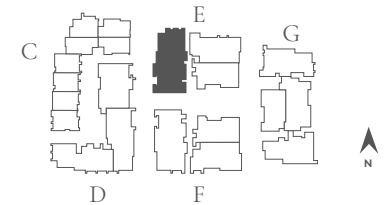
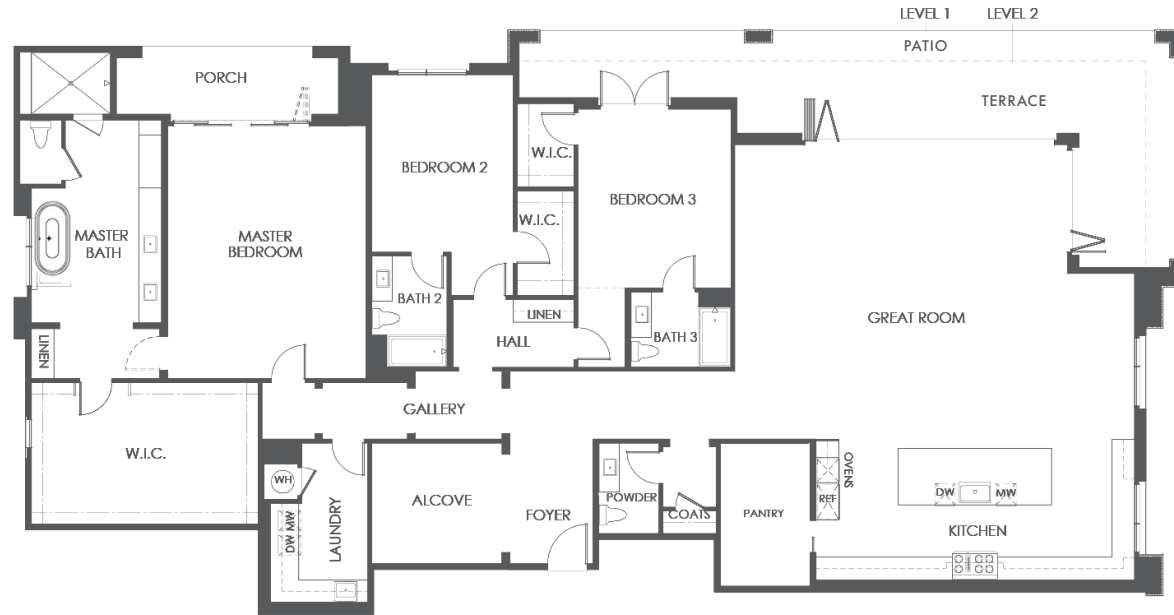
BEDROOMS  
3

BATHS  
3.5

ENTRY  
Level 1

NATURAL LIGHT  
Northwest Facing

FEATURES  
Alcove at Entry  
Great Room  
Patio  
3-Car Garage



BUILDING E | UNIT 107 | FLOOR PLAN 10B

SALES GALLERY  
328 W. GREEN ST. # 100  
PASADENA, CA 91105

CONTACT  
626.604.2460  
AGSALES@ETCOHOMES.COM

Walls, windows, patios and roof terraces vary per elevation and lot location. All illustrations are artist's concepts, are not to scale and are subject to change in actual production. Square footages are approximate. Builder has the right to change square footage, plans and pricing without notice. © 2021 etco HOMES. CalDRE license no. 01878688.