

# TERRACES

AT THE AMBASSADOR GARDENS

RESIDENCE

# 408

## PENTHOUSE

SIZE

2,972 Sq. Ft.

BEDROOMS

3

BATHS

3 Full + 2 Powder

ENTRY

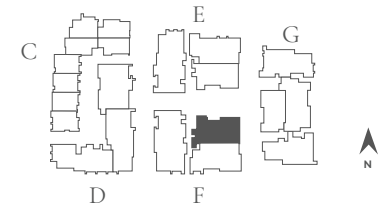
Level 4

NATURAL LIGHT

North Facing

FEATURES

Great Room  
Mezzanine  
Entertainment Room  
Roof Terrace  
4-Car Garage



BUILDING F | UNIT 408 | FLOOR PLAN 5A

SALES GALLERY

362 W. GREEN ST. # 114  
PASADENA, CA 91105

CONTACT

626.604.2460  
AGSALES@ETCOHOMES.COM

Walls, windows, patios and roof terraces vary per elevation and lot location. All illustrations are artist's concepts, are not to scale and are subject to change in actual production. Square footages are approximate. Builder has the right to change square footage, plans and pricing without notice. © 2021 etco HOMES. CalDRE license no. 01878688.

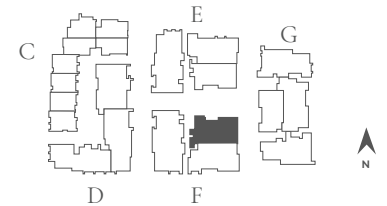
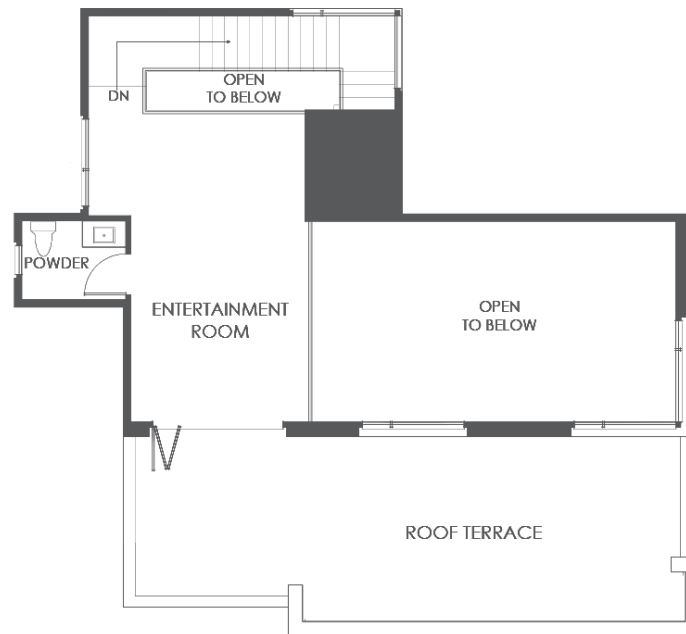
# TERRACES

AT THE AMBASSADOR GARDENS

RESIDENCE

408 MEZZANINE

PENTHOUSE



BUILDING F | UNIT 408 | FLOOR PLAN 5A

## SALES GALLERY

362 W. GREEN ST. # 114  
PASADENA, CA 91105

## CONTACT

626.604.2460  
AGSALES@ETCOHOMES.COM

Walls, windows, patios and roof terraces vary per elevation and lot location. All illustrations are artist's concepts, are not to scale and are subject to change in actual production. Square footages are approximate. Builder has the right to change square footage, plans and pricing without notice. © 2021 etco HOMES. CalDRE license no. 01878688.