

# TERRACES

AT THE AMBASSADOR GARDENS

RESIDENCE

311  
SINGLE-LEVEL

SIZE  
3,407 Sq. Ft.

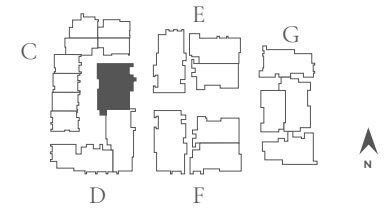
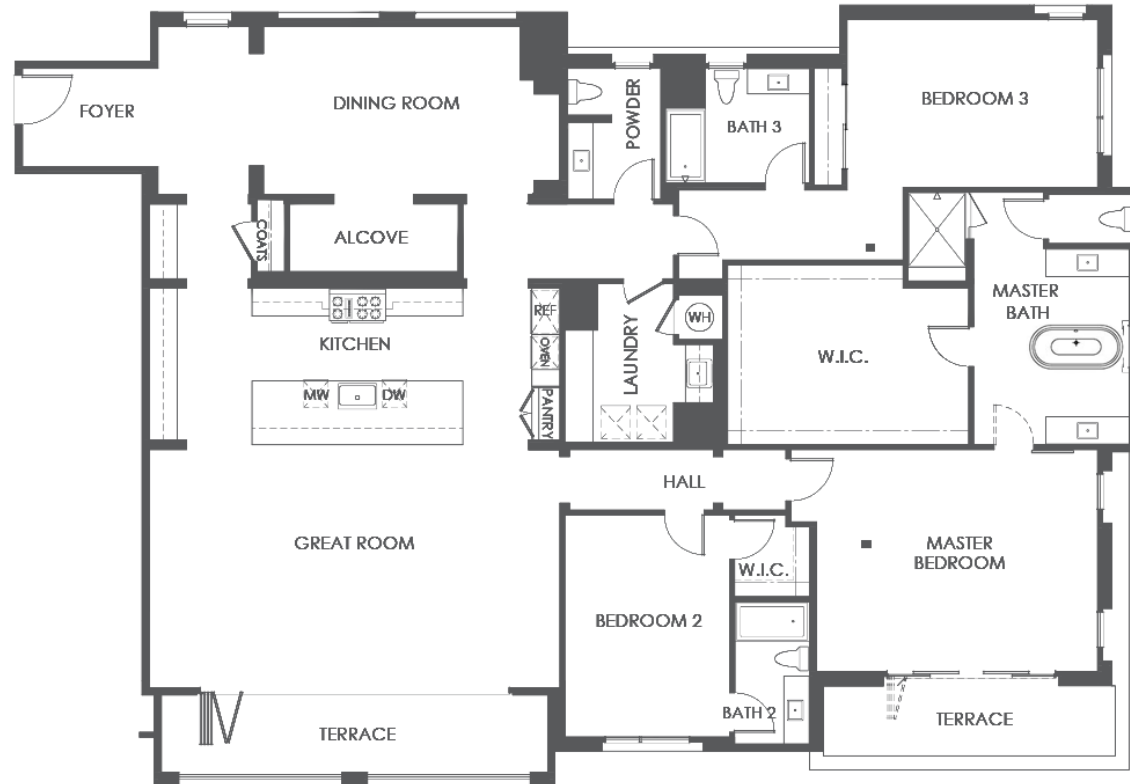
BEDROOMS  
3

BATHS  
3.5

ENTRY  
Level 3

NATURAL LIGHT  
East Facing

FEATURES  
Alcove at Entry  
Formal Dining Room  
with Butler's Pantry Great Room  
Terraces  
3-Car Garage



BUILDING D | UNIT 311 | FLOOR PLAN 8A

SALES GALLERY  
362 W. GREEN ST. # 114  
PASADENA, CA 91105

CONTACT  
626.604.2460  
AGSALES@ETCOHOMES.COM

Walls, windows, patios and roof terraces vary per elevation and lot location. All illustrations are artist's concepts, are not to scale and are subject to change in actual production. Square footages are approximate. Builder has the right to change square footage, plans and pricing without notice. © 2021 etco HOMES. CalDRE license no. 01878688.