

# TERRACES

AT THE AMBASSADOR GARDENS

RESIDENCE

# 208

SINGLE-LEVEL

SIZE

2,616 Sq. Ft.

BEDROOMS

3

BATHS

3.5

ENTRY

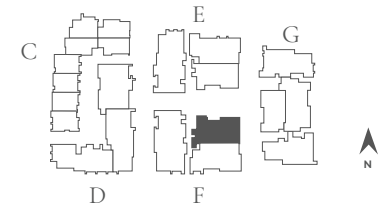
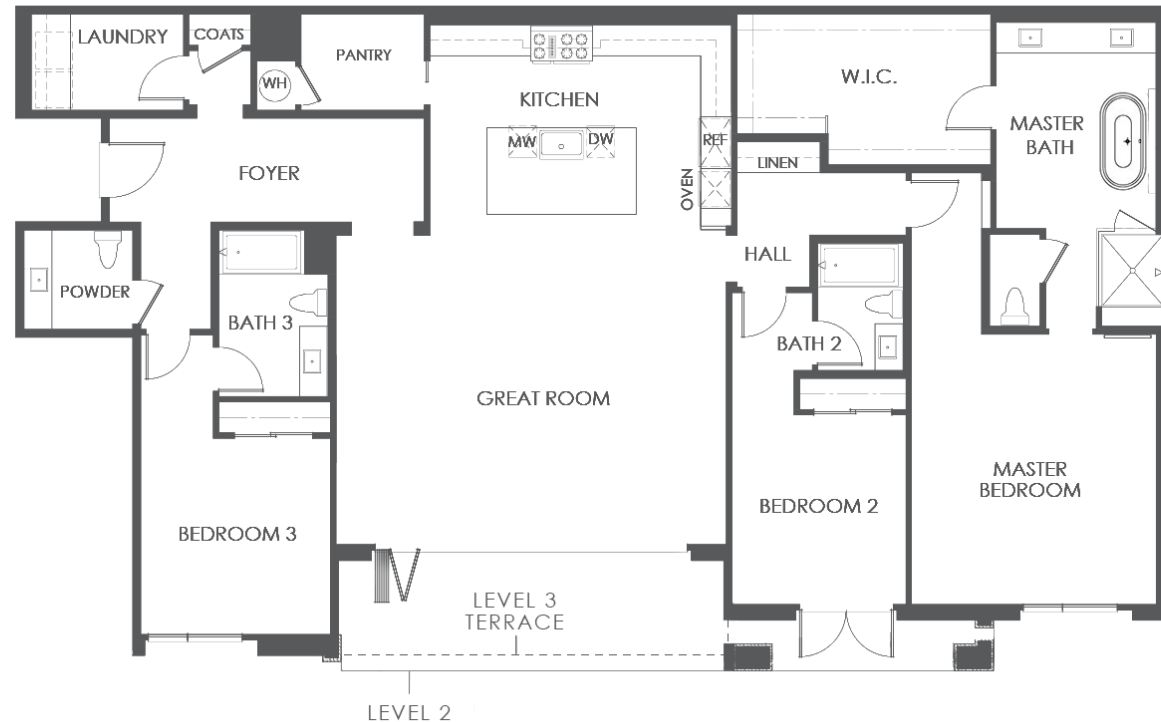
Level 2

NATURAL LIGHT

North Facing

FEATURES

Great Room  
Terrace Patio  
3-Car Garage



BUILDING F | UNIT 208 | FLOOR PLAN 5A

SALES GALLERY

362 W. GREEN ST. # 114  
PASADENA, CA 91105

CONTACT

626.604.2460  
AGSALES@ETCOHOMES.COM

Walls, windows, patios and roof terraces vary per elevation and lot location. All illustrations are artist's concepts, are not to scale and are subject to change in actual production. Square footages are approximate. Builder has the right to change square footage, plans and pricing without notice. © 2021 etco HOMES. CalDRE license no. 01878688.