

# TERRACES

AT THE AMBASSADOR GARDENS



RESIDENCE

205  
SINGLE-LEVEL

SIZE  
3,091 Sq. Ft.

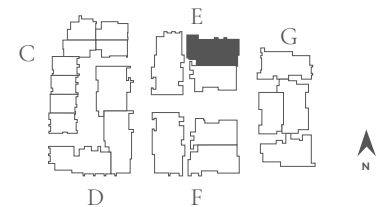
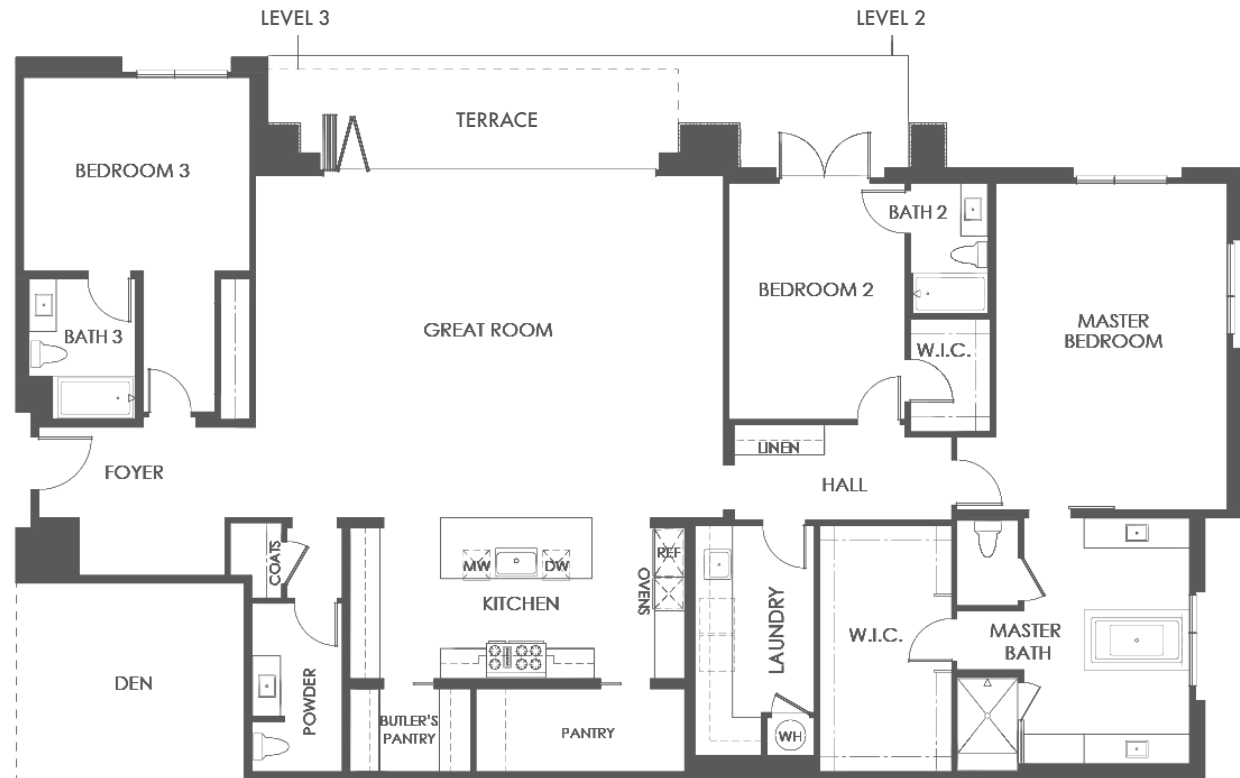
BEDROOMS  
3

BATHS  
3.5

ENTRY  
Level 2

NATURAL LIGHT  
North Facing

FEATURES  
Great Room  
Terrace Patio  
Den  
3-Car Garage



BUILDING E | UNIT 205 | FLOOR PLAN 7A

## SALES GALLERY

362 W. GREEN ST. # 114  
PASADENA, CA 91105

## CONTACT

626.604.2460  
AGSALES@ETCOHOMES.COM

Walls, windows, patios and roof terraces vary per elevation and lot location. All illustrations are artist's concepts, are not to scale and are subject to change in actual production. Square footages are approximate. Builder has the right to change square footage, plans and pricing without notice. © 2021 etco HOMES. CalDRE license no. 01878688.