

TERRACES

AT THE AMBASSADOR GARDENS



RESIDENCE

200

SINGLE-LEVEL

SIZE

2,980 Sq. Ft.

BEDROOMS

3

BATHS

3.5

ENTRY

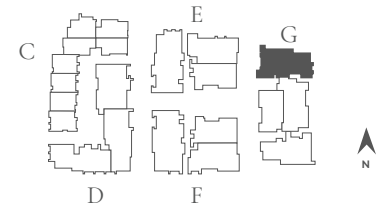
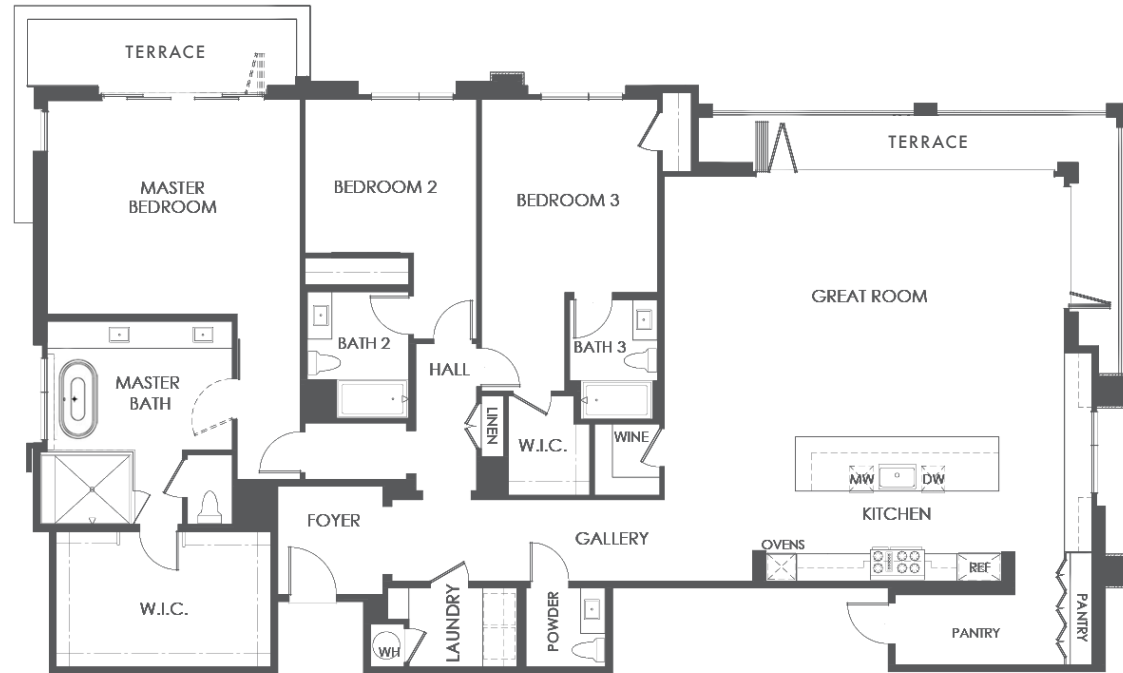
Level 2

NATURAL LIGHT

North Facing

FEATURES

Great Room
2 Terraces
3-Car Garage



BUILDING G | UNIT 200 | FLOOR PLAN 6B

SALES GALLERY

362 W. GREEN ST. # 114
PASADENA, CA 91105

CONTACT

626.604.2460
AGSALES@ETCOHOMES.COM

Walls, windows, patios and roof terraces vary per elevation and lot location. All illustrations are artist's concepts, are not to scale and are subject to change in actual production. Square footages are approximate. Builder has the right to change square footage, plans and pricing without notice. © 2021 etco HOMES. CalDRE license no. 01878688.