

TERRACES

AT THE AMBASSADOR GARDENS



RESIDENCE

I 2 I LEVEL ONE

TOWNHOME

SIZE
3,718 Sq. Ft.

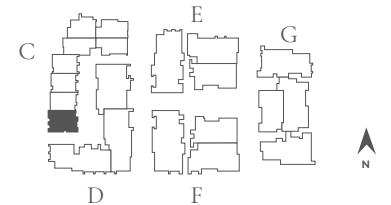
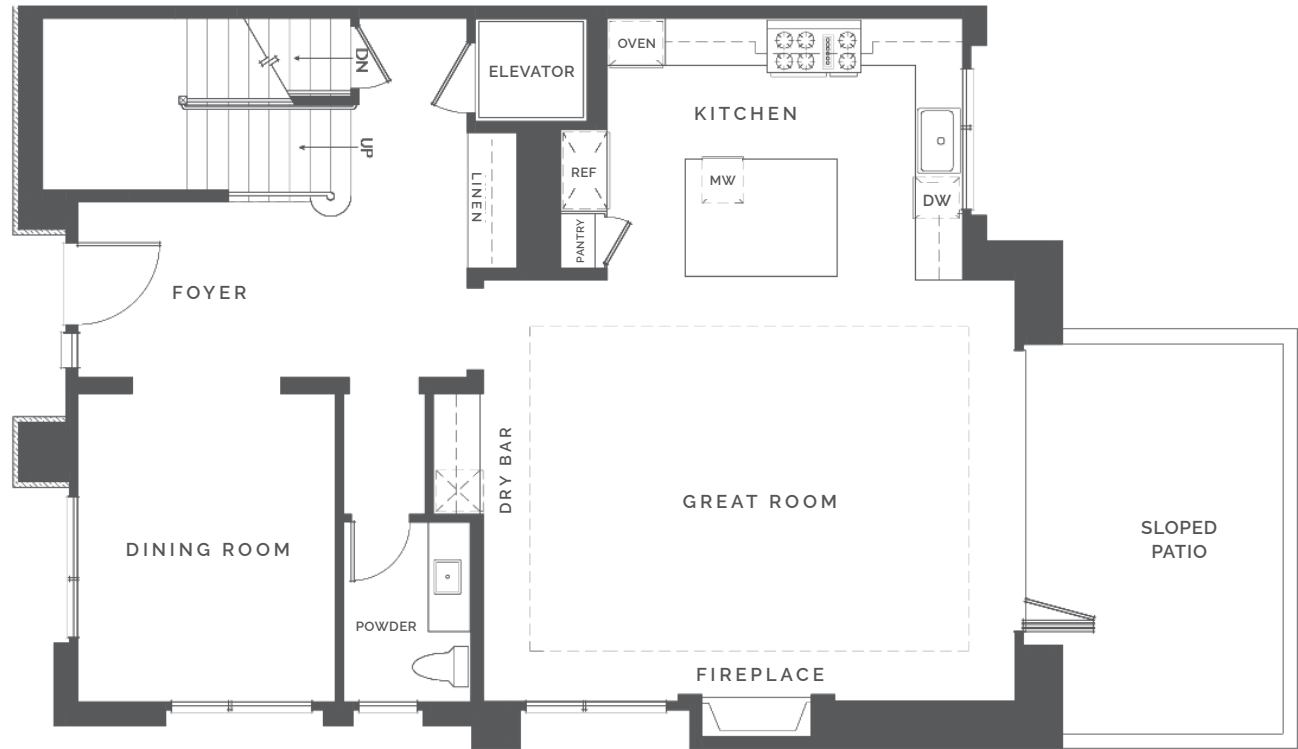
BEDROOMS
4

BATHS
4.5

ENTRY
Level 1

NATURAL LIGHT
West Facing

FEATURES
Formal Dining Room
with Butler's Pantry
Great Room with Fireplace
Media Room
Private Elevator
Roof Terrace
4-Car Garage



BUILDING C | UNIT 121 | FLOOR PLAN 4D

SALES GALLERY

362 W. GREEN ST. # 114
PASADENA, CA 91105

CONTACT

626.604.2460
AGSALES@ETCOHOMES.COM

Walls, windows, patios and roof terraces vary per elevation and lot location. All illustrations are artist's concepts, are not to scale and are subject to change in actual production. Square footages are approximate. Builder has the right to change square footage, plans and pricing without notice. © 2021 etco HOMES. CalDRE license no. 01878688.

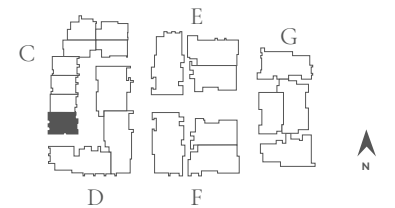
TERRACES

AT THE AMBASSADOR GARDENS

RESIDENCE

121 LEVEL TWO

TOWNHOME



BUILDING C | UNIT 121 | FLOOR PLAN 4D

SALES GALLERY

362 W. GREEN ST. # 114
PASADENA, CA 91105

CONTACT

626.604.2460
AGSALES@ETCOHOMES.COM

Walls, windows, patios and roof terraces vary per elevation and lot location. All illustrations are artist's concepts, are not to scale and are subject to change in actual production. Square footages are approximate. Builder has the right to change square footage, plans and pricing without notice. © 2021 etco HOMES. CalDRE license no. 01878688.

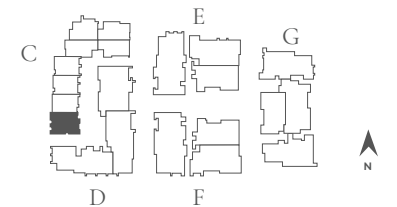
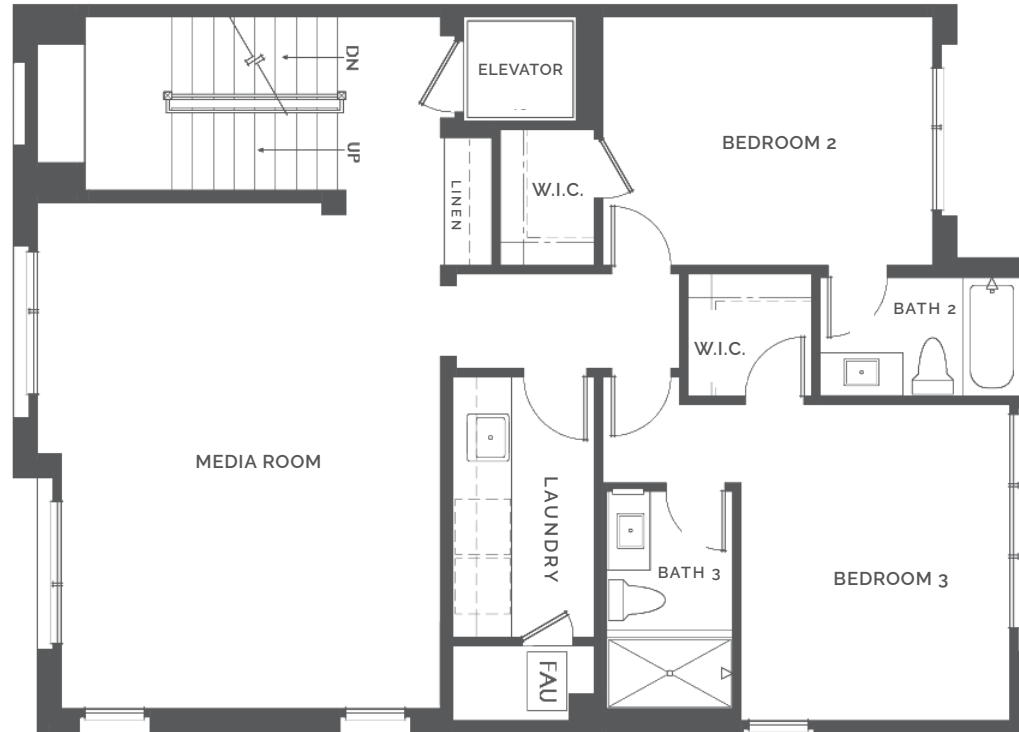
TERRACES

AT THE AMBASSADOR GARDENS

RESIDENCE

I 2 I LEVEL THREE

TOWNHOME



BUILDING C | UNIT 121 | FLOOR PLAN 4D

SALES GALLERY

362 W. GREEN ST. # 114
PASADENA, CA 91105

CONTACT

626.604.2460
AGSALES@ETCOHOMES.COM

Walls, windows, patios and roof terraces vary per elevation and lot location. All illustrations are artist's concepts, are not to scale and are subject to change in actual production. Square footages are approximate. Builder has the right to change square footage, plans and pricing without notice. © 2021 etco HOMES. CalDRE license no. 01878688.

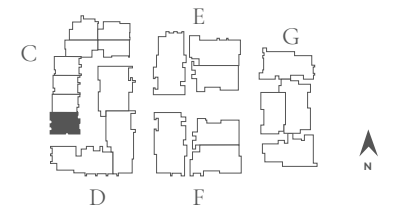
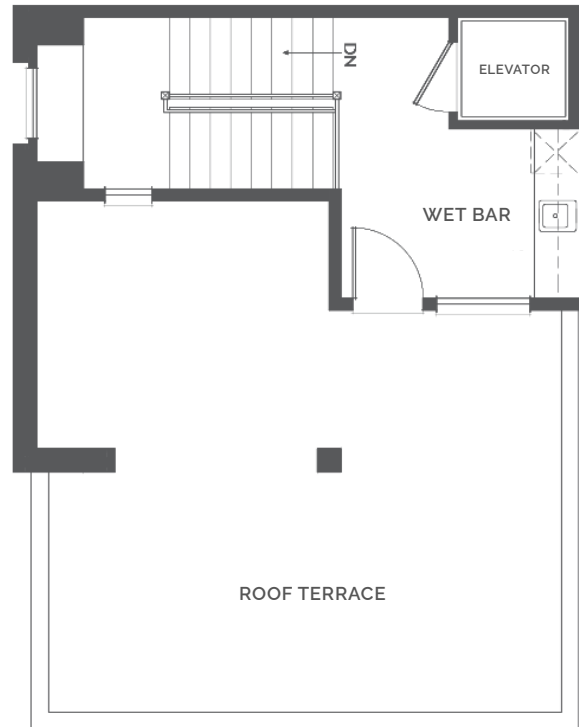
TERRACES

AT THE AMBASSADOR GARDENS

RESIDENCE

121 LEVEL FOUR

TOWNHOME



BUILDING C | UNIT 121 | FLOOR PLAN 4D

SALES GALLERY

362 W. GREEN ST. # 114
PASADENA, CA 91105

CONTACT

626.604.2460
AGSALES@ETCOHOMES.COM

Walls, windows, patios and roof terraces vary per elevation and lot location. All illustrations are artist's concepts, are not to scale and are subject to change in actual production. Square footages are approximate. Builder has the right to change square footage, plans and pricing without notice. © 2021 etco HOMES. CalDRE license no. 01878688.

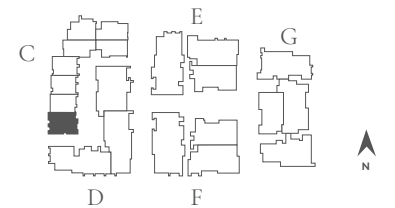
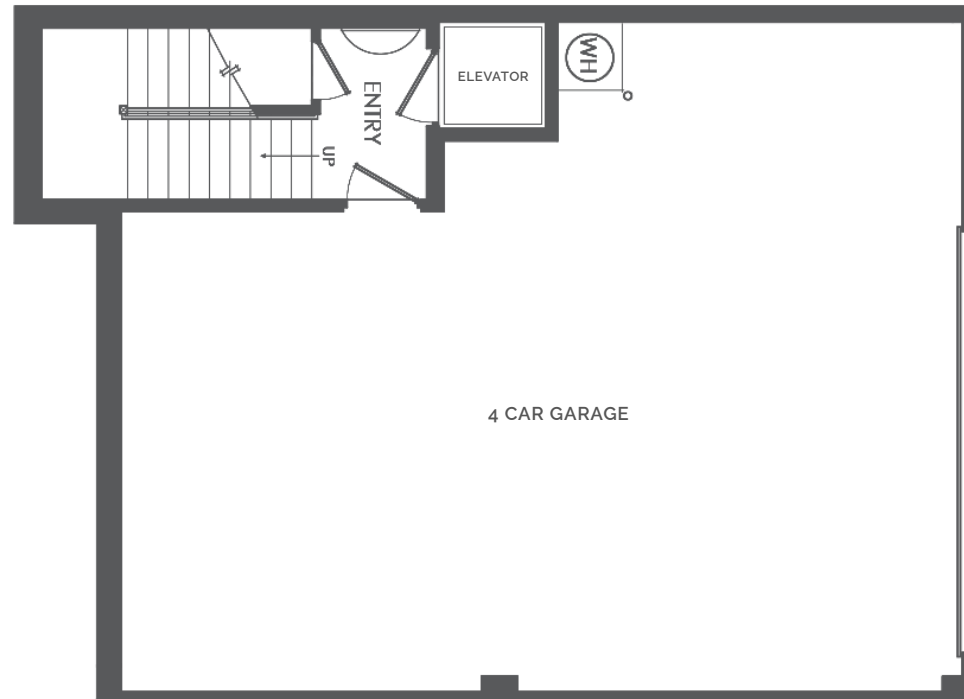
TERRACES

AT THE AMBASSADOR GARDENS

RESIDENCE

I 2 I BASEMENT

TOWNHOME



BUILDING C | UNIT 121 | FLOOR PLAN 4D

SALES GALLERY

362 W. GREEN ST. # 114
PASADENA, CA 91105

CONTACT

626.604.2460
AGSALES@ETCOHOMES.COM

Walls, windows, patios and roof terraces vary per elevation and lot location. All illustrations are artist's concepts, are not to scale and are subject to change in actual production. Square footages are approximate. Builder has the right to change square footage, plans and pricing without notice. © 2021 etco HOMES. CalDRE license no. 01878688.