

TERRACES

AT THE AMBASSADOR GARDENS



RESIDENCE

115 LEVEL ONE TOWNHOME

SIZE
3,040 Sq. Ft.

BEDROOMS
3

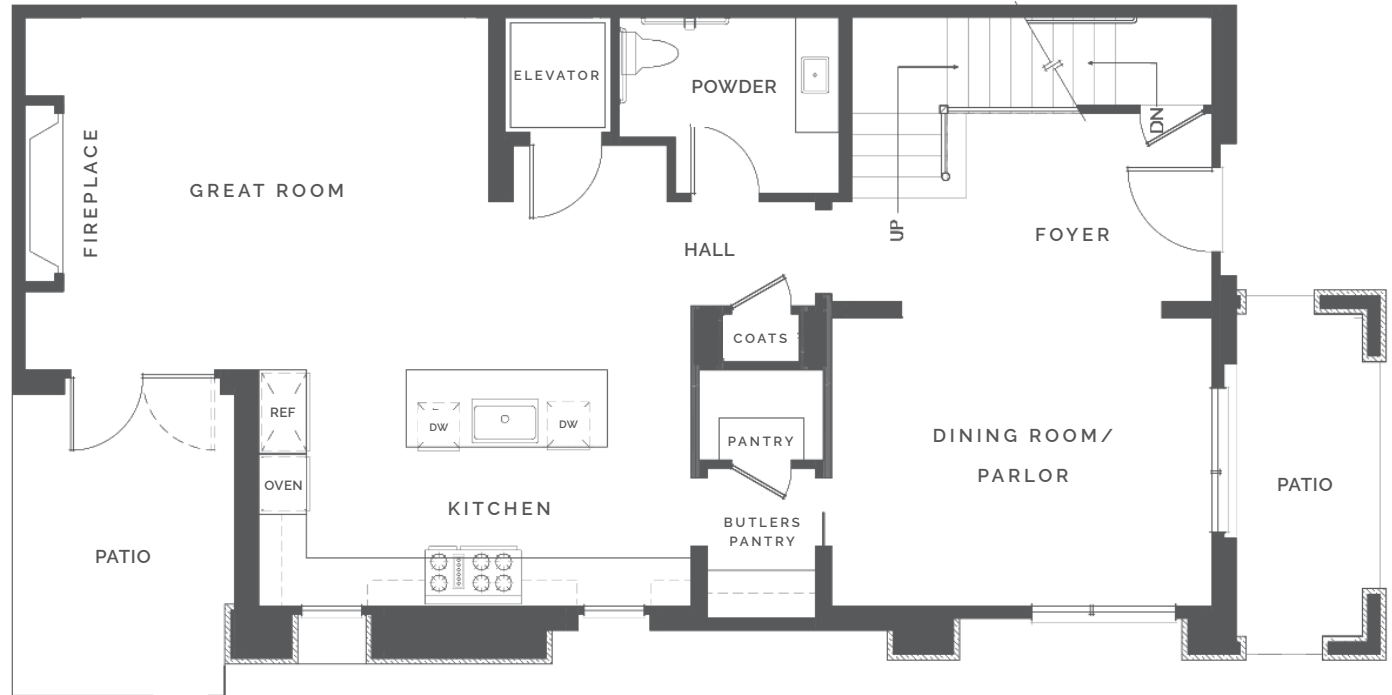
BATHS
3.5

ENTRY
Level 1

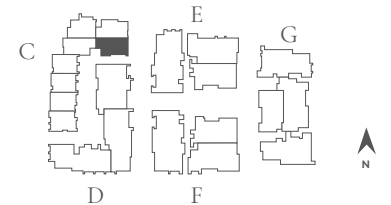
NATURAL LIGHT
East Facing

FEATURES

- Formal Dining Room with Butler's Pantry
- Great Room with Fireplace
- Media Room
- Private Elevator
- Ground-Floor Patios & Roof Terrace
- 4-Car Garage



BUILDING C | UNIT 115 | FLOOR PLAN 1F



SALES GALLERY

362 W. GREEN ST. # 114
PASADENA, CA 91105

CONTACT

626.604.2460
AGSALES@ETCOHOMES.COM

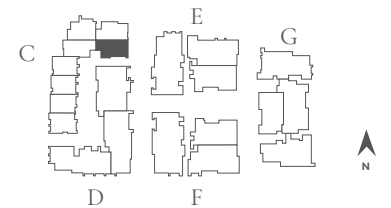
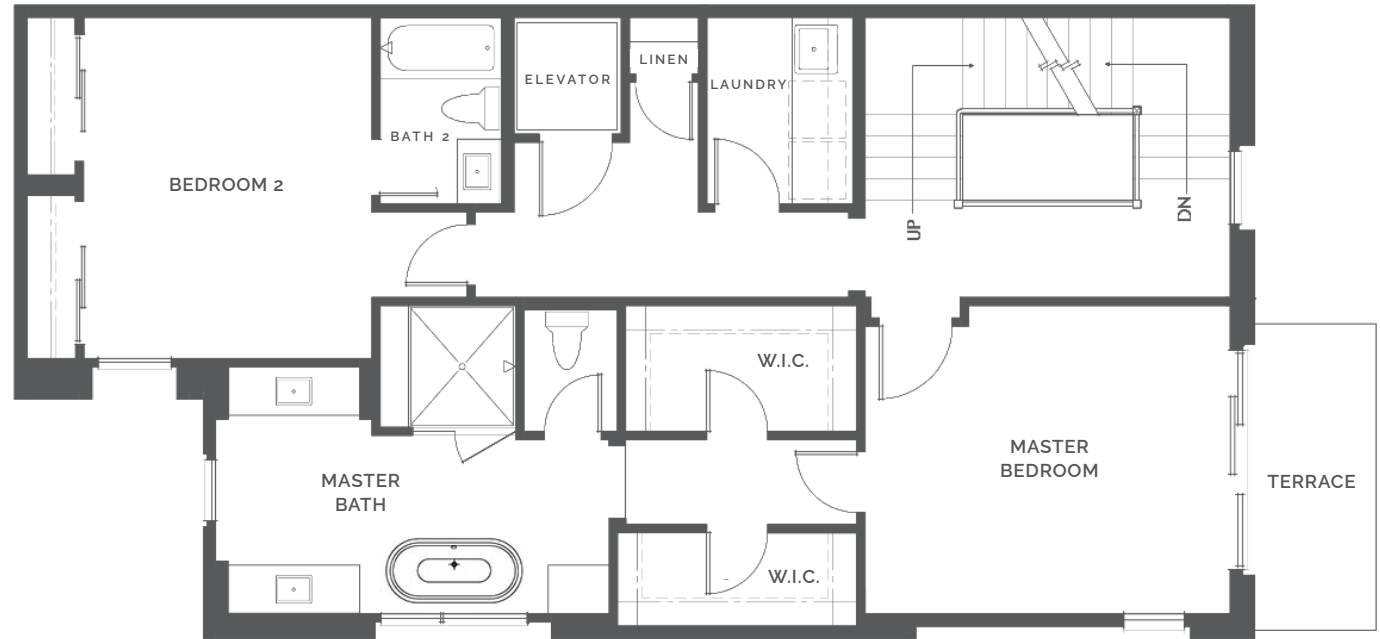
Walls, windows, patios and roof terraces vary per elevation and lot location. All illustrations are artist's concepts, are not to scale and are subject to change in actual production. Square footages are approximate. Builder has the right to change square footage, plans and pricing without notice. © 2021 etco HOMES. CalDRE license no. 01878688.

TERRACES

AT THE AMBASSADOR GARDENS

RESIDENCE

115 LEVEL TWO
TOWNHOME



BUILDING C | UNIT 115 | FLOOR PLAN 1F

SALES GALLERY

362 W. GREEN ST. # 114
PASADENA, CA 91105

CONTACT

626.604.2460
AGSALES@ETCOHOMES.COM

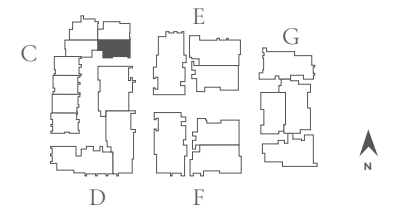
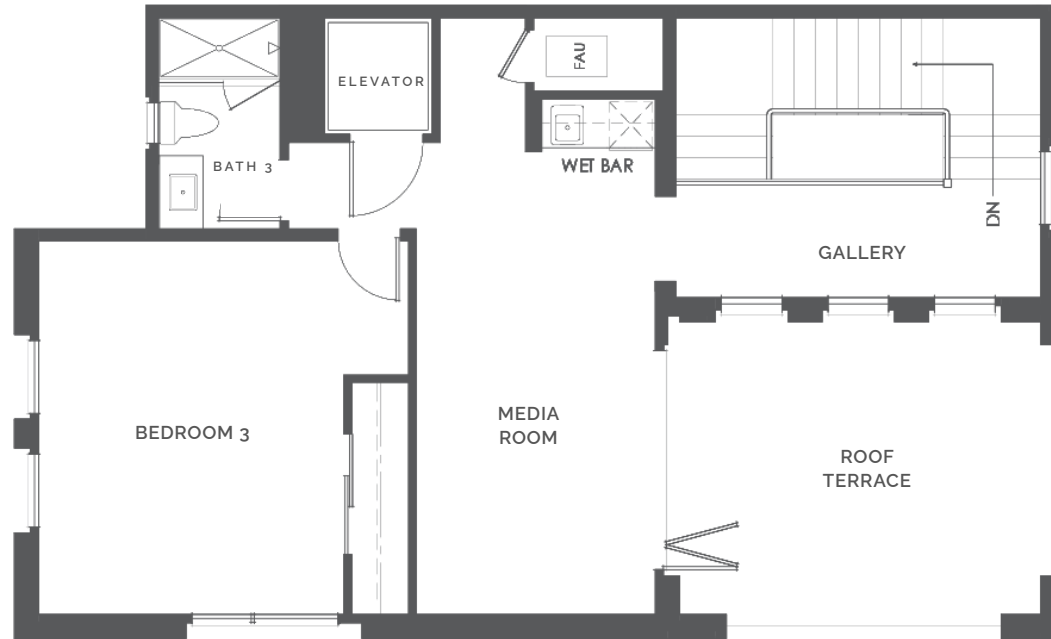
Walls, windows, patios and roof terraces vary per elevation and lot location. All illustrations are artist's concepts, are not to scale and are subject to change in actual production. Square footages are approximate. Builder has the right to change square footage, plans and pricing without notice. © 2021 etco HOMES. CalDRE license no. 01878688.

TERRACES

AT THE AMBASSADOR GARDENS

RESIDENCE

115 LEVEL THREE
TOWNHOME



BUILDING C | UNIT 115 | FLOOR PLAN 1F

SALES GALLERY

362 W. GREEN ST. # 114
PASADENA, CA 91105

CONTACT

626.604.2460
AGSALES@ETCOHOMES.COM

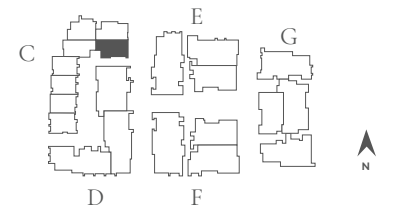
Walls, windows, patios and roof terraces vary per elevation and lot location. All illustrations are artist's concepts, are not to scale and are subject to change in actual production. Square footages are approximate. Builder has the right to change square footage, plans and pricing without notice. © 2021 etco HOMES. CalDRE license no. 01878688.

TERRACES

AT THE AMBASSADOR GARDENS

RESIDENCE

115 BASEMENT
TOWNHOME



BUILDING C | UNIT 115 | FLOOR PLAN 1F

SALES GALLERY

362 W. GREEN ST. # 114
PASADENA, CA 91105

CONTACT

626.604.2460
AGSALES@ETCOHOMES.COM

Walls, windows, patios and roof terraces vary per elevation and lot location. All illustrations are artist's concepts, are not to scale and are subject to change in actual production. Square footages are approximate. Builder has the right to change square footage, plans and pricing without notice. © 2021 etco HOMES. CalDRE license no. 01878688.