

TERRACES

AT THE AMBASSADOR GARDENS

RESIDENCE

114 LEVEL ONE
TOWNHOME

SIZE

3,211 Sq. Ft.

BEDROOMS

3

BATHS

3.5

ENTRY

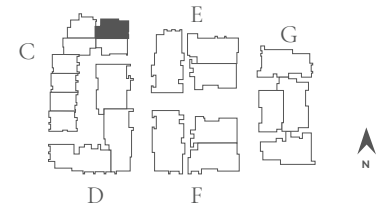
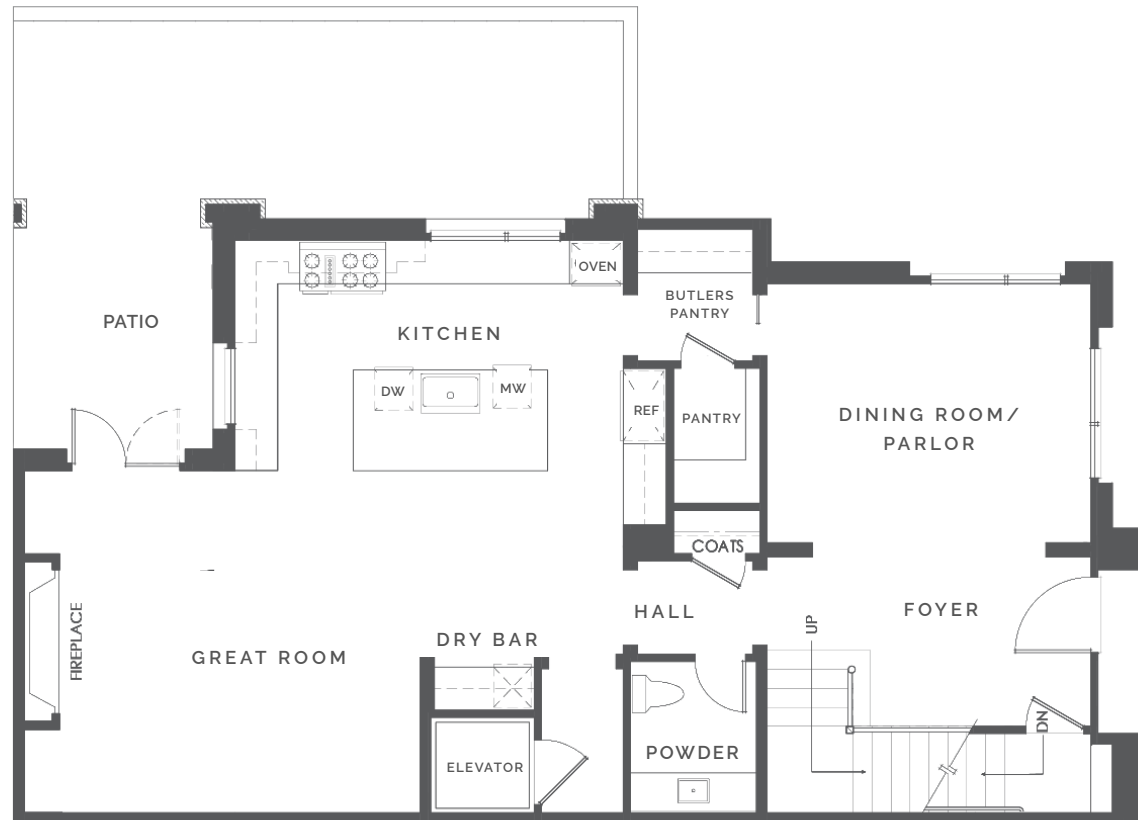
Level 1

NATURAL LIGHT

North Facing

FEATURES

Formal Dining Room
with Butler's Pantry
Great Room with Fireplace
Media Room
Private Elevator
Roof Terrace
4-Car Garage



BUILDING C | UNIT 114 | FLOOR PLAN 1G

SALES GALLERY

362 W. GREEN ST. # 114
PASADENA, CA 91105

CONTACT

626.604.2460
AGSALES@ETCOHOMES.COM

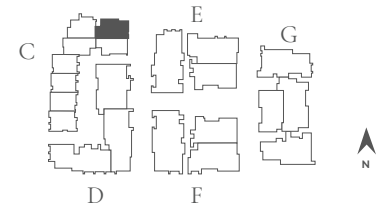
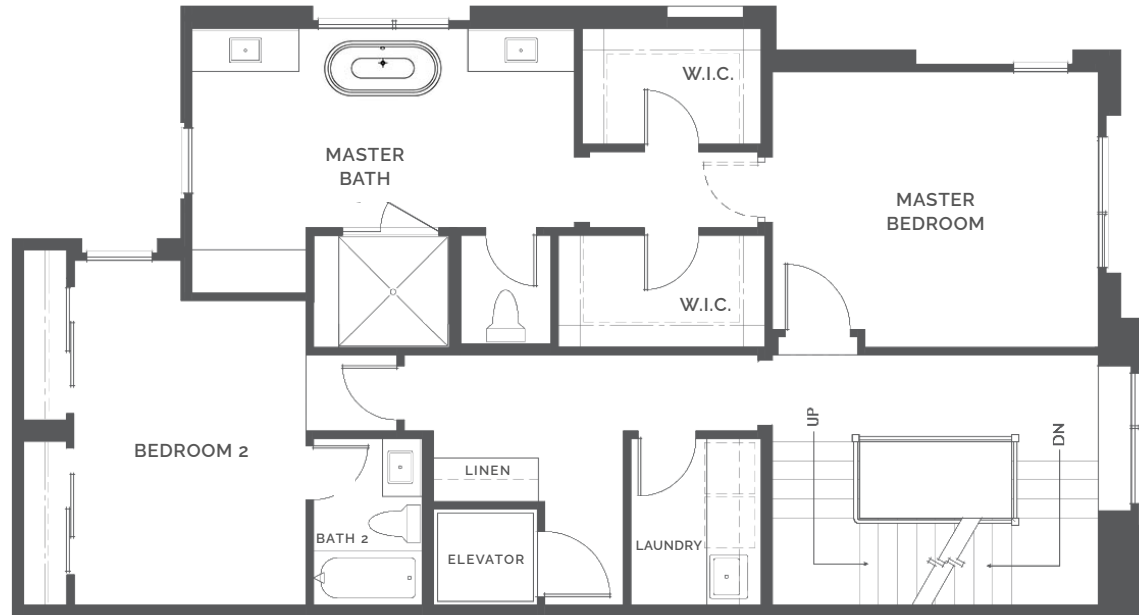
Walls, windows, patios and roof terraces vary per elevation and lot location. All illustrations are artist's concepts, are not to scale and are subject to change in actual production. Square footages are approximate. Builder has the right to change square footage, plans and pricing without notice. © 2021 etco HOMES. CalDRE license no. 01878688.

TERRACES

AT THE AMBASSADOR GARDENS

RESIDENCE

114 LEVEL TWO
TOWNHOME



BUILDING C | UNIT 114 | FLOOR PLAN 1G

SALES GALLERY

362 W. GREEN ST. # 114
PASADENA, CA 91105

CONTACT

626.604.2460
AGSALES@ETCOHOMES.COM

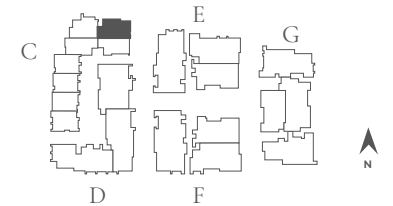
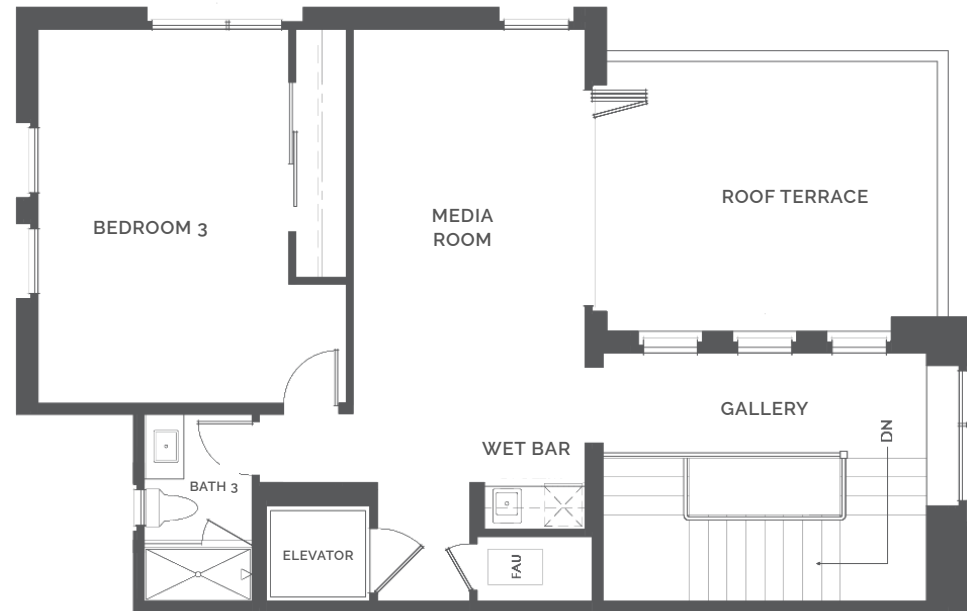
Walls, windows, patios and roof terraces vary per elevation and lot location. All illustrations are artist's concepts, are not to scale and are subject to change in actual production. Square footages are approximate. Builder has the right to change square footage, plans and pricing without notice. © 2021 etco HOMES. CalDRE license no. 01878688.

TERRACES

AT THE AMBASSADOR GARDENS

RESIDENCE

114 LEVEL THREE
TOWNHOME



BUILDING C | UNIT 114 | FLOOR PLAN 1G

SALES GALLERY

362 W. GREEN ST. # 114
PASADENA, CA 91105

CONTACT

626.604.2460
AGSALES@ETCOHOMES.COM

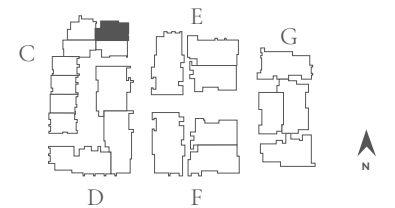
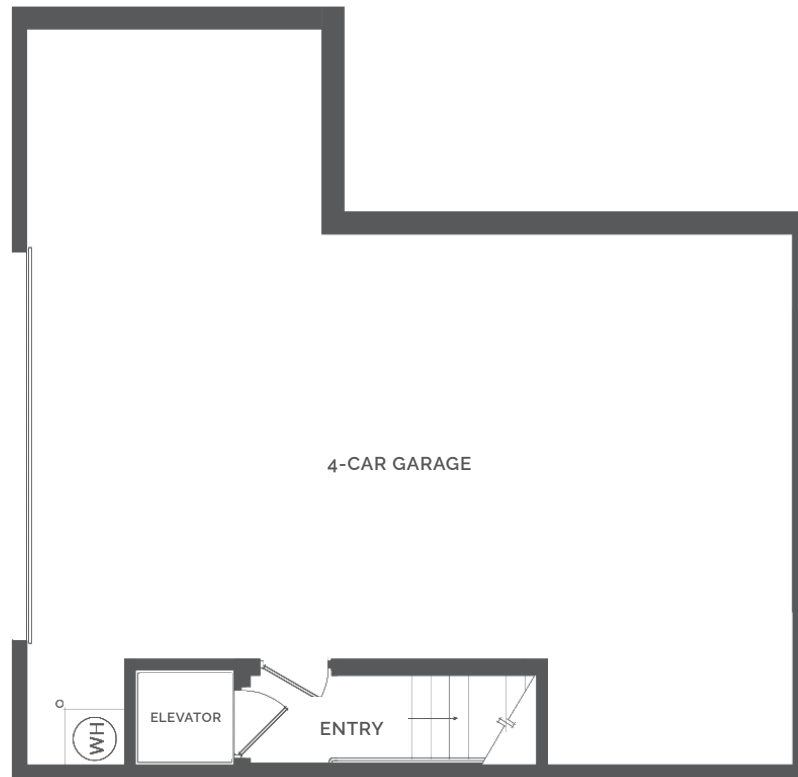
Walls, windows, patios and roof terraces vary per elevation and lot location. All illustrations are artist's concepts, are not to scale and are subject to change in actual production. Square footages are approximate. Builder has the right to change square footage, plans and pricing without notice. © 2021 etco HOMES. CalDRE license no. 01878688.

TERRACES

AT THE AMBASSADOR GARDENS

RESIDENCE

114 GARAGE
TOWNHOME



BUILDING C | UNIT 114 | FLOOR PLAN 1G

SALES GALLERY

362 W. GREEN ST. # 114
PASADENA, CA 91105

CONTACT

626.604.2460
AGSALES@ETCOHOMES.COM

Walls, windows, patios and roof terraces vary per elevation and lot location. All illustrations are artist's concepts, are not to scale and are subject to change in actual production. Square footages are approximate. Builder has the right to change square footage, plans and pricing without notice. © 2021 etco HOMES. CalDRE license no. 01878688.